

Instruction of 35mm tubular motor E# series

Feature

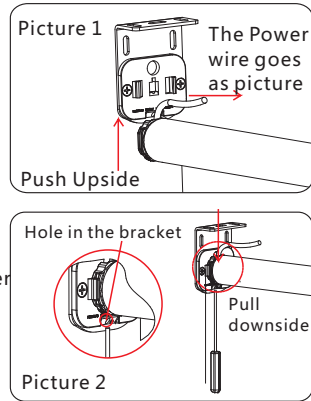
- * Patented quiet design ;
- * Super narrow 8mm only drive side, the fabric is 13mm space to the wall;
- * Precise and stable electronic limit, no accumulated error;
- * Stop against block/hindranc to protec the whole motor;
- * Remote setting of limit, programming, very convenient;
- * 2 Intermediate stop limits ;
- * Dry contact for external low voltage controlling ;
- * RS485 BUS controlling for automation system to feedback the status of motorized curtain.

Attention in installing

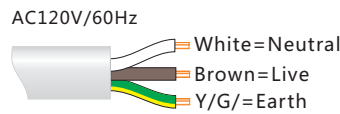
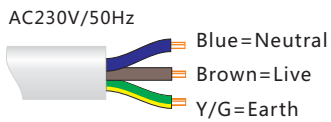
- * No water drop into the motor;
- * No rain exposed ;
- * Do not knock or hammer onto the motor ;
- * Do not exposed to erosive substances.

Bracket of Super Narrow Space

1. Installing : Put the motor driving side oppositeto the bracket as picture, and do not damage the power wire, push the motor upside and it makes very clear sound in case the shaft bounce out from the hole of bracket. That's to say the installing is done.
2. uninstalling of the bracket: from downside, the screw driver goes inside the hole to the most deep, and then take the motor out from the bracket.

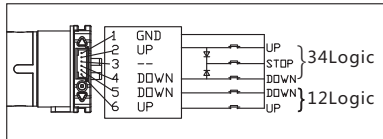


Wiring of Power

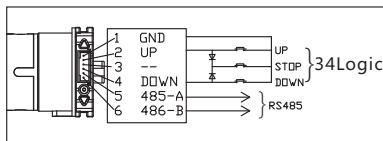


Wiring Diagram of Dry Contact

12 Logic and 34logic wiring



34 Logic and Rs485 Wiring



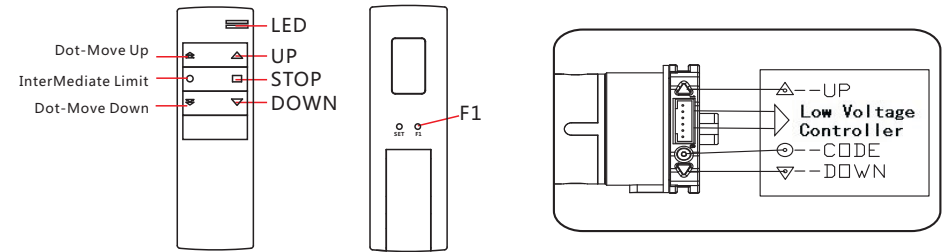
Function of 6P6C

PIN	DESCRIPTION
1	GND
2	CLOSE(34)
3	OPEN/STOP/CLOSE/STOP
4	OPEN(34)
5	CLOSE(12)/RS485-B
6	OPEN(12)/RS485-A

- Attention : 1、 The logic ON is dry contact pulse signal , Duration is100-200ms.
2、 Special instruction of Rs485 should be told prior to production.

Instruction of 35mm tubular motor E# series

Buttons in the remote



Remote Controller

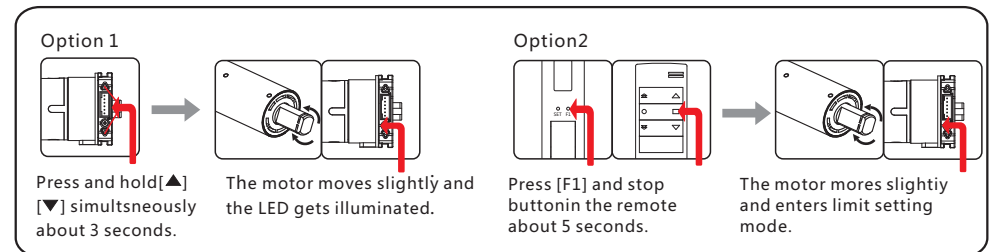
Buttons in the remote

Function setting

Function	1st	2nd	3rd
Program code	Option1 : 	Press the UP button in the remote	The LED flashes 3 times and motor moves slightly to tell the setting is done.
Clear code	Press [●] about 2 seconds, LED stays illuminated enter setting mode,	Witin 15 seconds, press the Round button/Code button more than 3 seconds.	
Reverse moving	Option2 : 	Press the DOWN button in the remote.	
Shift of Dot-Move and Normal Move	Within 3 seconds after the power on, Press [F1] illuminated and in the remote, The LED stays illuminated and enter setting mode.	Within 15 seconds press the Stop button	

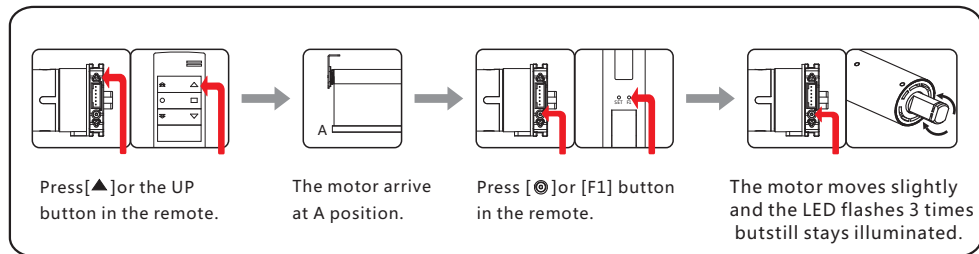
Limit setting

1、 How to Enter the limit setting mode

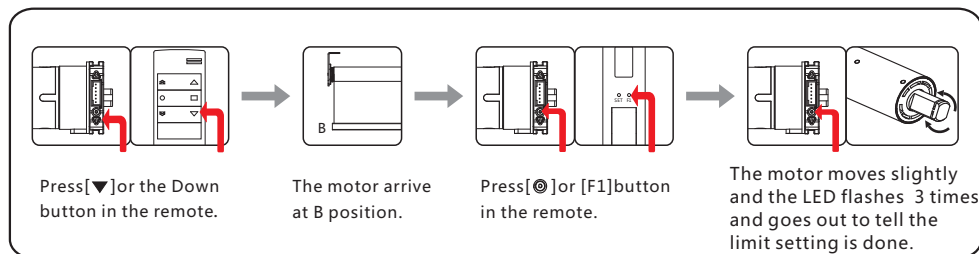


Instruction of 35mm tubular motor E# series

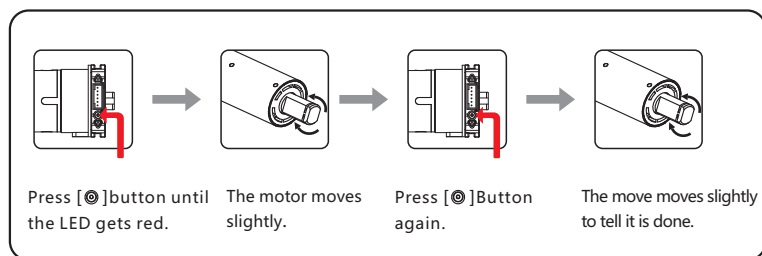
2. Limit Setting (Understand Limit settingmode) : Set 1st limit.



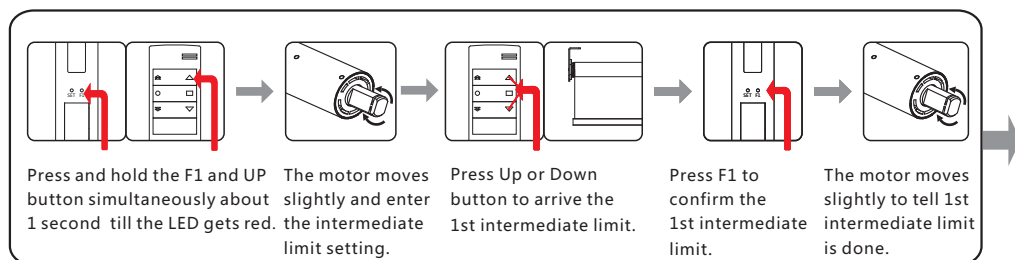
3. Limit setting (under limit setting mode) : Set the 2nd limit



■ Clearing of Limit (Enter limit setting mode) :

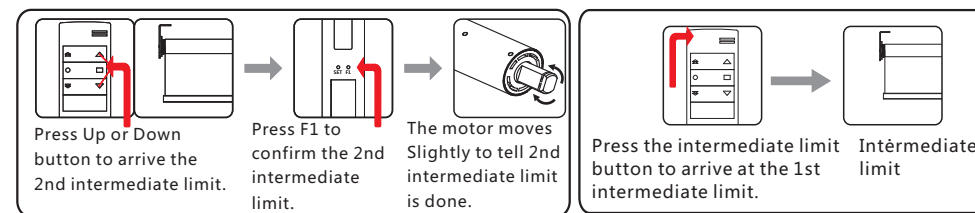


■ Intermediate Limit setting

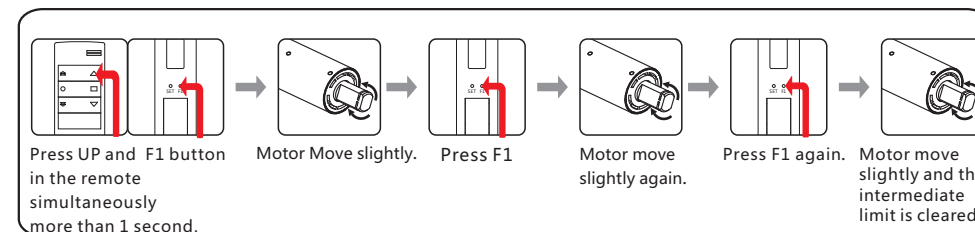


Instruction of 35mm tubular motor E# series

Operating:



Clearing of Intermediate limit :



Block/Hindrance of Moving :

If the moving of motor is blocked by something, and the motor can not go further , the motor will move reverse direction about 50mm, and move again its previous direction.

To try whether the motor can escape the block/hindrance. If the motor cannot get rid of the block/hindrance, it will stop automatically to protect the motor.

■ Trouble Shooting Guide

S/N	Trouble	Problem	Solution
1	Motor doesn't move or move slowly	A. No Voltage or insufficient voltage B. Overload C. Some accessories is stuck	A. Check Voltage B. Get new motor with suitable torque C. Check the accessories installing
2	Motor doesn't move, or move to single direction or move very little	End of Limit	Re-set the limit
3	Sudden stop of moving	Overheated	Cool about 30 minutes and recover to work.
4	The Fabric is rolling to one side	A. The Fabric is not well attached to the tube B. Not well adjust of fabric in tube C. The Fabric is not well cut	A. Adjuste the tube and fabric attached B. Rework to attached the fabric C. Rework the fabric cutting
5	Move as Dot-Move	Work under Dot-move mode	Shift to normal mode
6	Move to the opposite direction as remote controlling	Reverse moving setting	Correct it by reverse moving setting